

Photometric Report

ERA 800-CRI filter – Medium

MARTIN PROFESSIONAL R&D OPTICAL LABORATORY

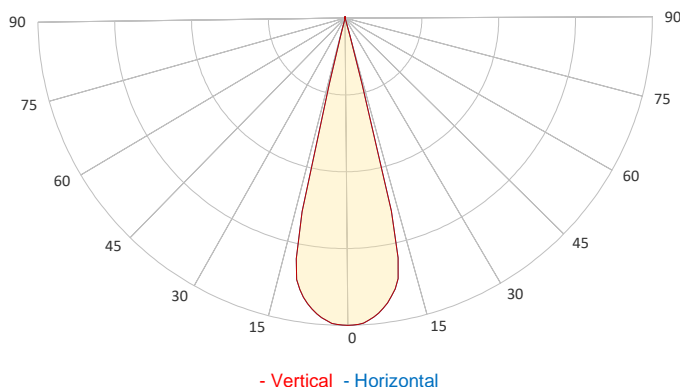
GENERAL SPECIFICATIONS

Total Fixture Output:	25000 lm
Light Engine Output:	70 klm
Efficacy:	22 lm/W
Lens Option:	N/A
Beam Angle (50%):	6-49°
Field Angle (10%):	°
Cut-off Angle (3%):	°
CRI:	79
CQS:	76
TM-30 Rf:	77
TM-30 Rg:	98
TLCI:	57
Color Temperature:	6500 K



SAMPLE MEASUREMENT

POLAR PLOT

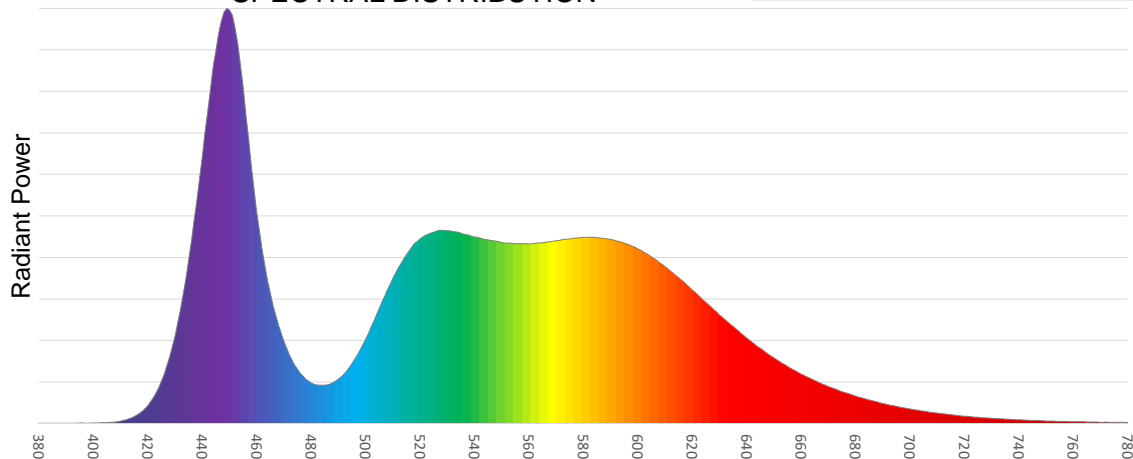


Catalog Number:	ERA 800 CRI Boost Filter
MAR -91614059	
Measured Output:	24368 lm
Measured Peak:	147290 cd
Consumed Power:	1161.5 W
Efficacy:	21.8 lm/W

Beam Angle (50%):	26.7°
Field Angle (10%):	29°
Cut-off Angle (3%):	30.8°

Measurement Condition:	
Ambient Temperature:	25° +/- 5° C
AC Supply:	230V/50Hz
Fan Mode:	
Fixture Warm-up Time:	60 minutes

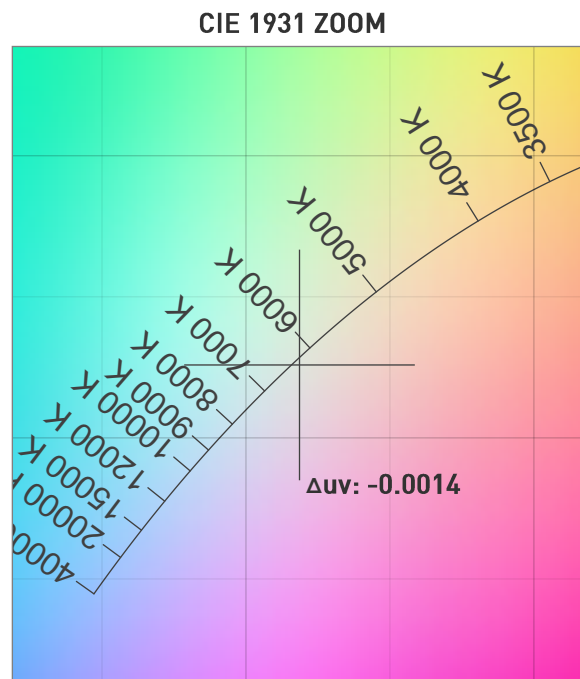
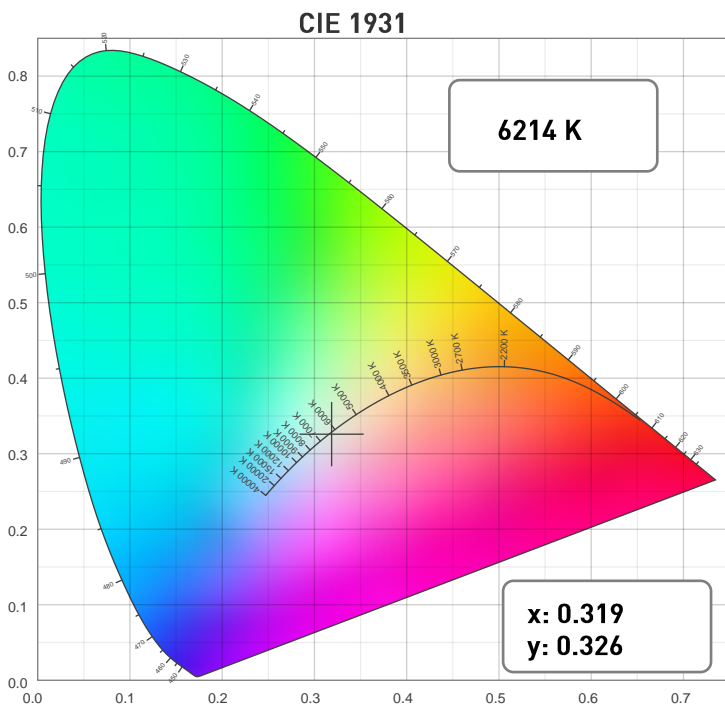
SPECTRAL DISTRIBUTION



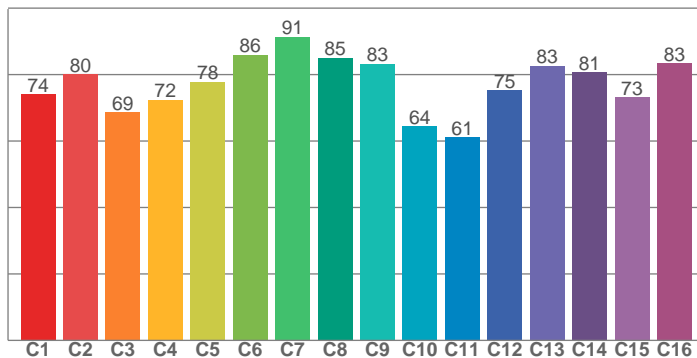
Photometric Report

ERA 800-CRI filter – Medium

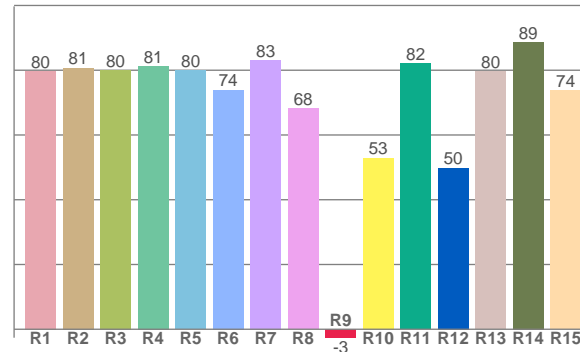
CHROMATICITY



TM30: 76.8



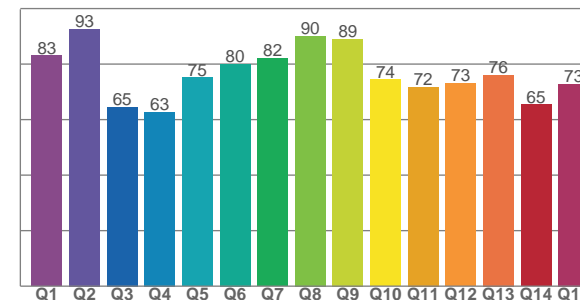
CRI: 78.4 (R1-R8)



COLOR PARAMETERS

Color Temperature	Color Rendering Index	Red Component	Color Fidelity	Color Gamut
CCT	CRI	CRI R9	TM30 Rf	TM30 Rg
6214 K	78.4	-2.6	76.8	98.0

CQS: 75.2



Television Lighting Consistency Index	Color Quality Scale	Color Coordinate CIE 1931	Color Coordinate CIE 1931	Color Coordinate CIE 1964	Color Coordinate CIE 1964	Color Deviation from Black Body
TLCI	CQS	x	y	u	v	Δuv
57	75.2	0.319	0.326	0.203	0.312	-0.0014

Photometric Report

ERA 800-CRI filter – Medium

TM30

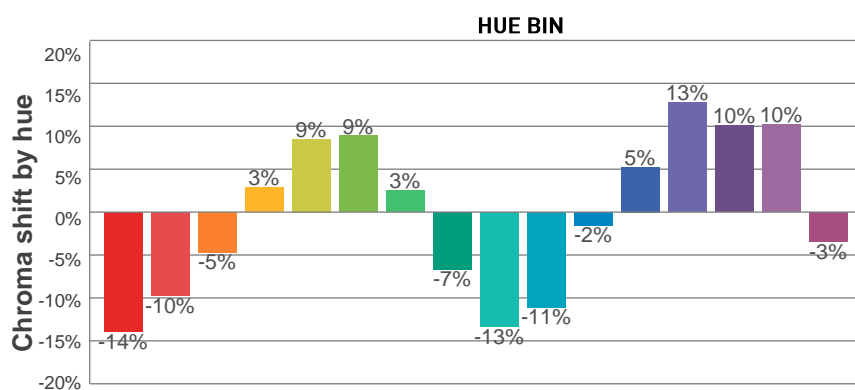
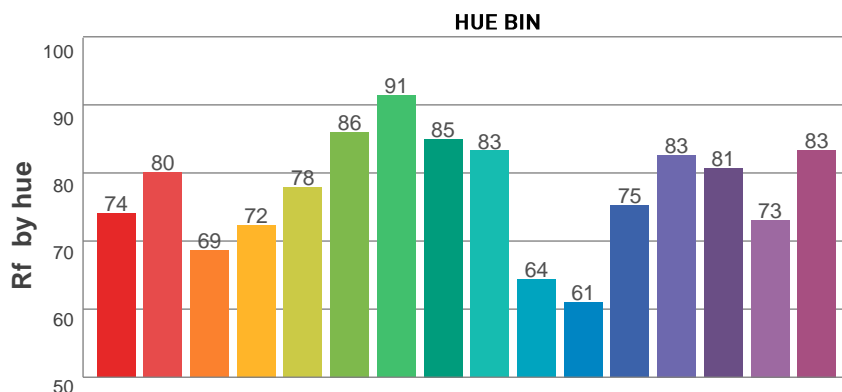
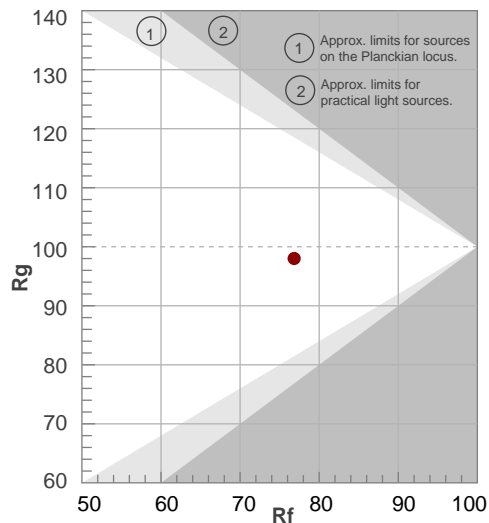
Rf 76.8

Fidelity index Rf

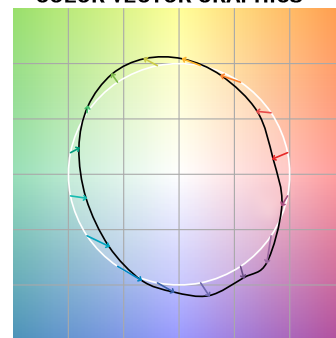
Rg 98.0

Gamut index Rg

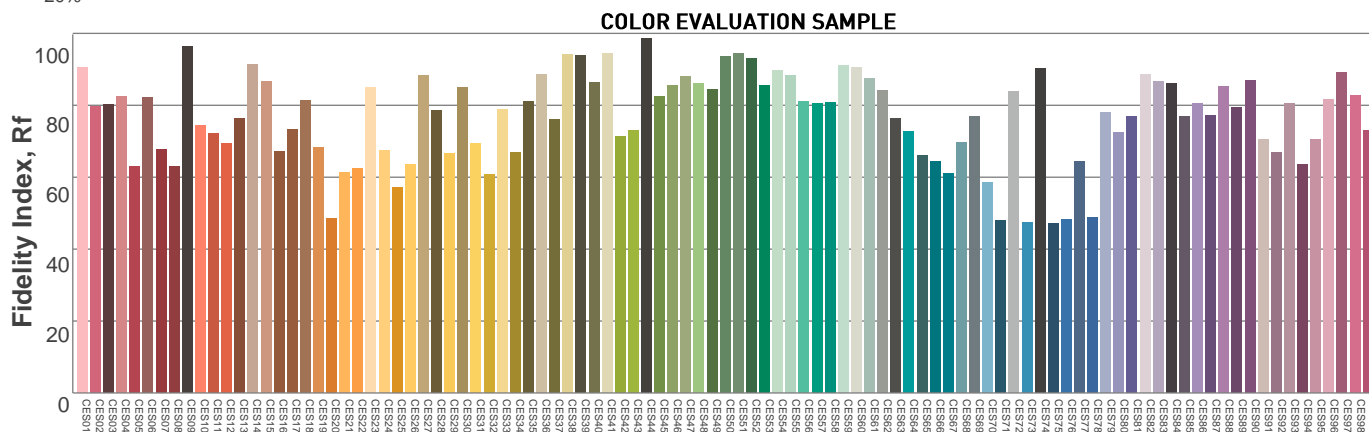
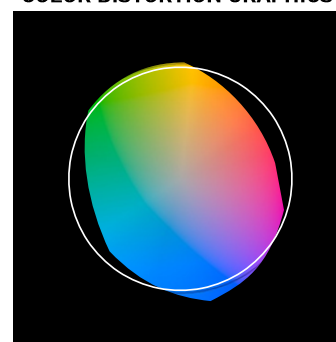
Hue Bin	R _f	Graphic shifts (%)	
		Chroma	Hue
1	74	-14%	-3%
2	80	-10%	8%
3	69	-5%	18%
4	72	3%	17%
5	78	9%	10%
6	86	9%	0%
7	91	3%	-5%
8	85	-7%	-5%
9	83	-13%	5%
10	64	-11%	19%
11	61	-2%	25%
12	75	5%	16%
13	83	13%	5%
14	81	10%	-3%
15	73	10%	-22%
16	83	-3%	-9%



COLOR VECTOR GRAPHICS



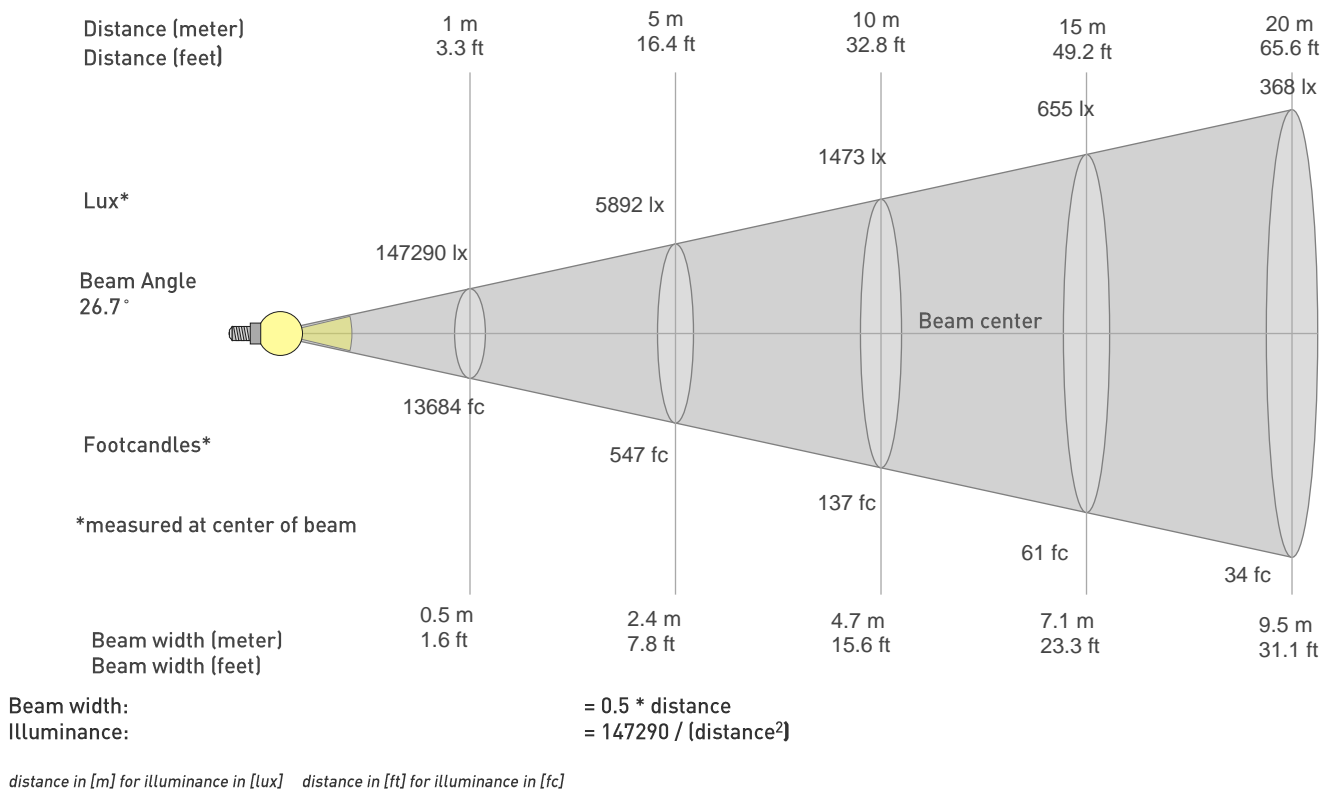
COLOR DISTORTION GRAPHICS



Photometric Report

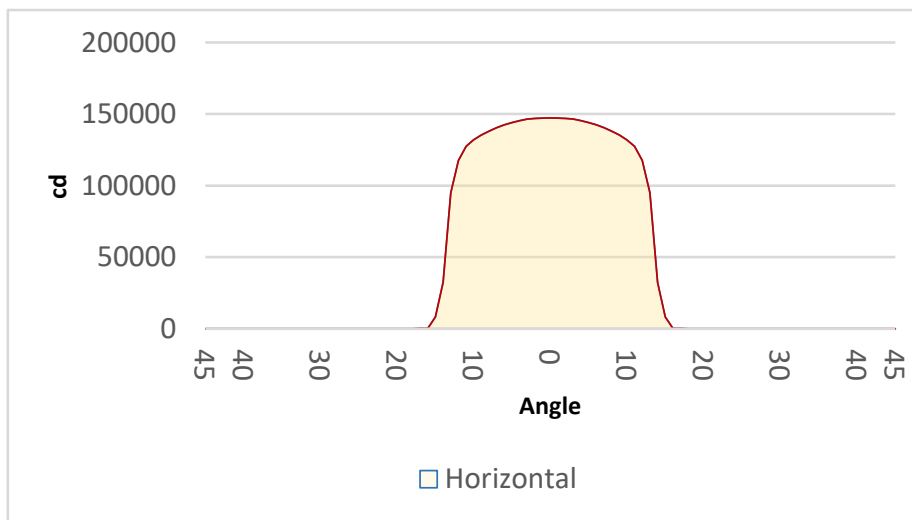
ERA 800-CRI filter – Medium

BEAM DETAILS



BEAM ILLUMINANCE FROM 1-20M

1m	2m	3m	4m	5m	6m	7m	8m	9m	10m	11m	12m	13m	14m	15m	16m	17m	18m	19m	20m
3.3ft	6.6ft	9.8ft	13.1ft	16.4ft	19.7ft	23ft	26.2ft	29.5ft	32.8ft	36.1ft	39.4ft	42.7ft	45.9ft	49.2ft	52.5ft	55.8ft	59.1ft	62.3ft	65.6ft
147290lx	36823lx	16366lx	9206lx	5892lx	4091lx	3006lx	2301lx	1818lx	1473lx	1217lx	1023lx	872lx	751lx	655lx	575lx	510lx	455lx	408lx	368lx
13683.7fc	3420.9fc	1520.4fc	855.2fc	547.3fc	380.1fc	279.3fc	213.8fc	168.9fc	136.8fc	113.1fc	95fc	81fc	69.8fc	60.8fc	53.5fc	47.3fc	42.2fc	37.9fc	34.2fc



BEAM ANGLE 50%	FIELD ANGLE 10%	CUTOFF ANGLE 3%
26.7°	29°	30.8°